
Leveling Agent



Leveling agent is the crucial surface active additives in industrial applications such as coatings, inks, adhesives, and varnish. It is a kind of [chemical auxiliaries](#) and its core function is to improve the flowability and leveling of liquid coatings on the substrate surface, thereby obtaining a smooth, flat, and defect free surface appearance after curing/drying.

[Leveling Agent](#) Function

***Reduce surface tension:** significantly reduce the surface tension of the coating, allowing it to better wet the substrate (especially low surface energy substrates such as plastics), reducing shrinkage and fisheye caused by poor wetting.

***Homogenization of surface tension:** Reduce the difference in surface tension inside the coating (especially between the surface and bottom layers), eliminate the flow caused by surface tension gradients (Benard vortex), and thus reduce defects such as orange peel and ripples.

***Promote lateral flow:** In the early stage of coating drying/curing, extend the time for the coating to maintain a flowing state ("open time"), allowing the coating to fully level under the action of surface tension, eliminating brush marks, roller marks, spray fog

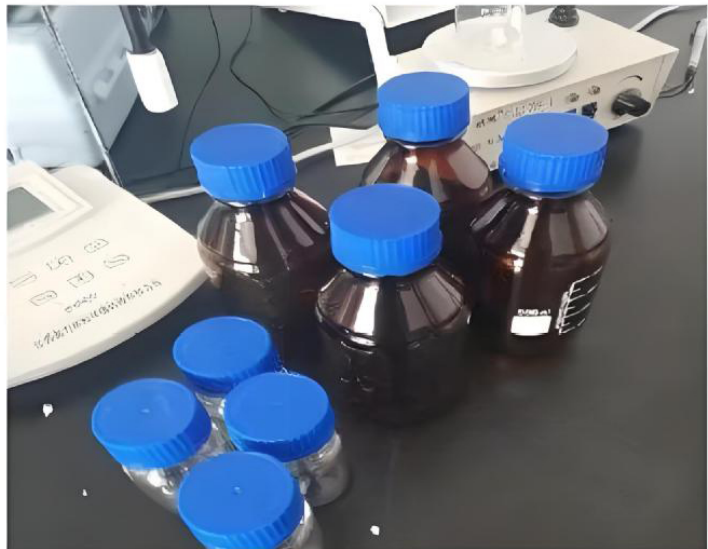
spots, etc.

***Improve substrate wetting:** Help the coating spread more evenly on the substrate, reducing pinholes and volcanic craters.

***Control solvent release/migration:** Some leveling agents can affect the uniformity of solvent evaporation, reducing surface unevenness caused by local rapid drying.

***Compatibility control:** By adjusting the compatibility (partial compatibility) with the system, a monolayer is formed on the surface to exert a leveling effect.

PRODUCTS REAL SHOT



Leveling Agent Application

Paint industry

1. Industrial coatings:

- * Automotive Coatings
- * Wood and furniture paint
- * Plastic coating
- * Anti corrosion coating:
- * Floor coating: Eliminate trowel marks and roller marks in epoxy and polyurethane floors to achieve a mirror effect or even orange peel texture (according to design requirements).

2. Architectural coatings:

- * Latex paint for interior and exterior walls
- * Metal/Genuine Stone Paint/Texture Paint
- * Waterproof coating

2. Ink industry

- * Offset printing ink
- * Gravure printing ink
- * Flexographic printing ink
- * Screen printing ink
- * Digital inkjet ink

APPLICATION



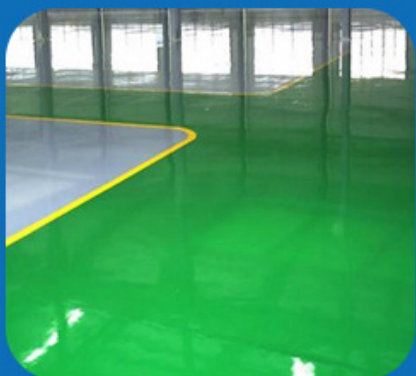
Industrial coating



Printing ink



Adhesive



Epoxy flooring



Plastic track



Wood coating

Yeah ! Add Some Color To Your Life ! XCWY Dyes Welcome your contact !

Contact person: Miss Jessie Geng

Email: jessie@xcwychem.com

Mobilephone/Whatsapp: +86-13503270825

Product link : <https://www.xcwydyes.com/leveling-agent.html>